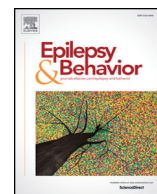




Contents lists available at ScienceDirect

Epilepsy & Behavior

journal homepage: www.elsevier.com/locate/yebeh



Corrigendum

Corrigendum to “Relationships between knowledge, attitudes, stigma, anxiety and depression, and quality of life in epilepsy: A structural equation modeling” [Epilepsy Behav 85 (2018) 212–217]



Kubra Yeni ^a, Zeliha Tulek ^{b,*}, Omer Faruk Simsek ^c, Nerses Bebek ^d

^a Ondokuz Mayıs University, Faculty of Health Sciences, Turkey

^b Istanbul University-Cerrahpasa Florence Nightingale Faculty of Nursing, Turkey

^c Istanbul Arel University, Faculty of Science and Letters, Department of Psychology, Turkey

^d Istanbul University, Istanbul Medical Faculty, Department of Neurology, Turkey

The authors regret that one number and signs of the numbers in the last row of [Table 2](#) were incorrect. The authors would like to apologize for any inconvenience caused.

DOI of original article: <https://doi.org/10.1016/j.yebeh.2018.06.019>.

* Corresponding author.

E-mail address: ztulek@istanbul.edu.tr (Z. Tulek).

<https://doi.org/10.1016/j.yebeh.2020.107414>

1525-5050/© 2020 Elsevier Inc. All rights reserved.

Table 2

Means, standard deviations, and intercorrelations of observed variables.

Observed variables	M	SD	1	2	3	4	5	6	7	8	9
1. Epilepsy effect	54.63	31.06	–								
2. Mental health	55.79	19.06	0.23**	–							
3. Role functioning	62.57	25.16	0.52**	0.41**	–						
4. Knowledge parcel 1	3.68	1.24	0.09	–0.02	0.05	–					
5. Knowledge parcel 2	3.47	1.12	0.16*	0.09	0.14*	0.52**	–				
6. Knowledge parcel 3	3.88	1.46	0.01	0.03	–0.03	0.48**	0.53**	–			
7. Anxiety	7.36	3.91	–0.29**	–0.50**	–0.35**	–0.16*	–0.10	–0.03	–		
8. Depression	5.39	3.53	–0.24**	–0.60**	–0.33**	–0.15*	–0.22**	–0.13	0.59**	–	
9. Attitude	59.31	7.88	0.17*	0.23**	0.16*	0.24**	–0.24**	0.35**	–0.19**	–0.42**	–
10. Stigma	1.90	2.55	–0.23**	–0.33**	–0.36**	–0.07	–0.16*	–0.08	0.27**	0.27**	–0.14*

Notes: $N = 205$.* $p = 0.05$.** $p = <0.01$.